

Project: Patchwork Pillow

INSPIRED BY "TRIPLE PLAY" FROM DESIGNER PATTY YOUNG  
PROJECT MAKER: JUDY SAMS SOHN



Project maker Judy Sams Sohn used prints from Patty Young's Mezzanine collection for Michael Miller Fabrics to make a rectangular patchwork pillow. You could use fabric scraps for this easy-to-piece project.

## Project: Patchwork Pillow

### Materials

- 12— $3\frac{1}{2}$ " squares assorted prints in pink, green, red, and blue (pillow top)
- $\frac{3}{8}$  yard red-and-green floral (pillow top, pillow back)
- $12\frac{1}{2}\times 16\frac{1}{2}$ " rectangle lightweight fusible interfacing
- $12\times 16$ " pillow form

Finished pillow:  $12\times 16$ "

Quantities are for 44/45"-wide 100% cotton fabrics.

Measurements include  $\frac{1}{4}$ " seam allowances. Sew with right sides together unless otherwise stated.

### Cut Fabrics

Cut pieces in the following order.

#### From red-and-green floral, cut:

- 2— $10\frac{3}{4}\times 12\frac{1}{2}$ " rectangles
- 2— $4\times 12\frac{1}{2}$ " rectangles

### Assemble Pillow Top

1. Lay out assorted print  $3\frac{1}{2}$ " squares in four rows (Diagram 1). When you are pleased with the arrangement, join squares in each row. Press seams in one direction, alternating direction with each row. Join rows to make pillow top center; press seams in one direction. The pillow top center should be  $9\frac{1}{2}\times 12\frac{1}{2}$ " including seam allowances.
2. Sew red-and-green floral  $4\times 12\frac{1}{2}$ " rectangles to long edges of pillow top center to make pillow top (Diagram 2). Press seams away from center. The pillow top should be  $12\frac{1}{2}\times 16\frac{1}{2}$ " including seam allowances.

### Finish Pillow

1. Following manufacturer's instructions, fuse interfacing  $12\frac{1}{2}\times 16\frac{1}{2}$ " rectangle to wrong side of pillow top.
2. Turn under one long edge of each red-and-green floral  $10\frac{3}{4}\times 12\frac{1}{2}$ " rectangle  $\frac{1}{4}$ "; press. Turn under  $\frac{1}{4}$ " again and stitch in place to hem pillow back pieces.
3. Referring to Pillow Back Assembly Diagram, overlap hemmed edges of pillow back pieces by about 4" to make a  $16\frac{1}{2}\times 12\frac{1}{2}$ " pillow back. Baste overlapped edges.
4. Layer pillow top and back. Stitch around all edges to make pillow cover. Turn right side out and press. Insert pillow form through opening in pillow back.

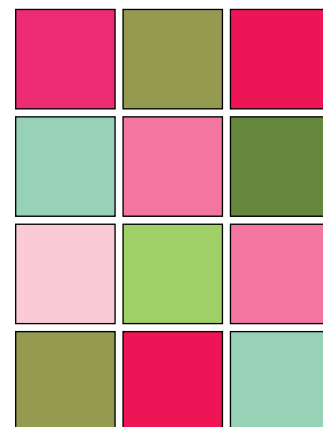


DIAGRAM 1

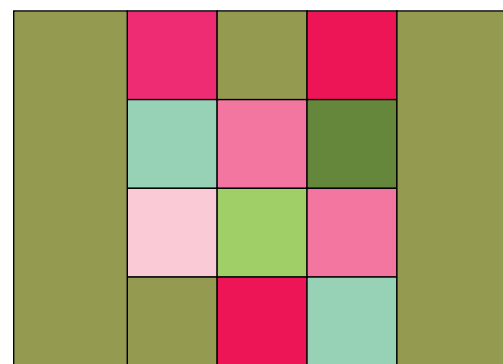
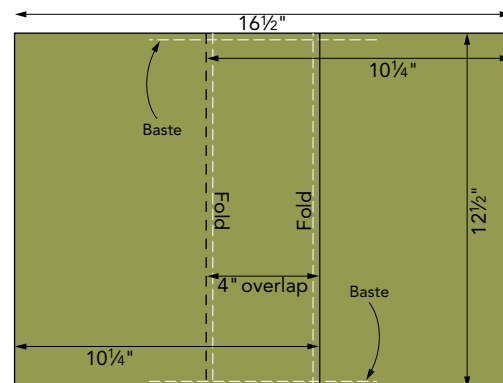


DIAGRAM 2



PILLOW BACK ASSEMBLY DIAGRAM