

Project: Small Treat Totes

DESIGNER: MONICA SOLORIO-SNOW OF HAPPY ZOMBIE (THEHAPPYZOMBIE.COM)



Stitch two fat quarter pieces into a quartet of mini totes. These wee gift bags made of prints from the Confections collection by Caleb Gray for Robert Kaufman Fabrics (robertkaufman.com) have grosgrain ribbon handles.

Project: Small Treat Totes

Materials for Four Bags

This project results in two sets of two contrasting bags each (for example, two light bags with dark bottoms and two dark bags with light bottoms)

- 1—18×22" piece (fat quarter) *each* of light and dark novelty prints (bags, linings)
- 8—6"-long pieces $\frac{3}{8}$ "-wide grosgrain ribbon: pink, orange (If you select a lightweight ribbon, purchase twice the amount needed and fuse or stitch two pieces together to achieve the necessary stability.)

Finished bag: 4×4×2"

Quantities are for 100% cotton fabrics.

Measurements include $\frac{1}{4}$ " seam allowances. Sew with right sides together unless otherwise stated.

Cut Fabrics

Cut pieces in the following order. See **Cutting Diagram** on page 3 to get the most pieces from each fat quarter. To save time, layer two fat quarters and rotary-cut through both layers.

From each light and dark novelty print, refer to Cutting Diagram and cut:

- 4— $5\frac{1}{2}\times 6\frac{1}{2}$ " rectangles
- 4— $3\frac{1}{2}\times 6\frac{1}{2}$ " rectangles
- 4— $2\frac{1}{2}\times 6\frac{1}{2}$ " rectangles

Assemble Bags

1. For one light bag you will need two dark print $5\frac{1}{2}\times 6\frac{1}{2}$ " rectangles, two dark print $2\frac{1}{2}\times 6\frac{1}{2}$ " rectangles, and two light print $3\frac{1}{2}\times 6\frac{1}{2}$ " rectangles.
2. Referring to **Diagram 1**, join one light print $3\frac{1}{2}\times 6\frac{1}{2}$ " rectangle and one dark print $2\frac{1}{2}\times 6\frac{1}{2}$ " rectangle along one pair of long edges to make bag piece.
3. Referring to **Diagram 2**, pin ends of one 6"-long ribbon piece to right side of bag piece, 2" from side edges. (If you are using a printed ribbon, place right side of ribbon toward right side of bag piece.)
4. Referring to **Diagram 3**, layer a dark print $5\frac{1}{2}\times 6\frac{1}{2}$ " rectangle (lining) and bag piece, right sides together. Sew together along one pair of long edges to make a bag unit.
5. Repeat steps 2-4 to make a second bag unit.
6. With right sides together, layer bag units; pin. Join units around all edges, leaving a 3" opening along lining edge for turning (**Diagram 4**). Press seams open.
7. To shape flat bottom for bag, at one corner match bottom seam line to side seam line, creating a flattened triangle (**Diagram 5**). Measuring 1" from point of triangle, draw a 2"-long line across triangle. Sew on drawn line. Trim excess fabric, leaving $\frac{1}{4}$ " seam allowance. Repeat with remaining bottom corner of bag and both corners of lining.
8. Turn bag right side out through opening and finger-press seams. Slip-stitch lining opening closed. Insert lining into bag to complete a light bag. Press along top edge.
9. Repeat steps 1-8 to make a second light bag and two dark bags, reversing fabric placement for dark bags.

Project: Small Treat Totes

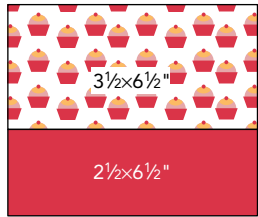


DIAGRAM 1

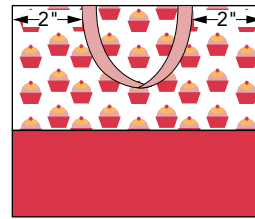


DIAGRAM 2

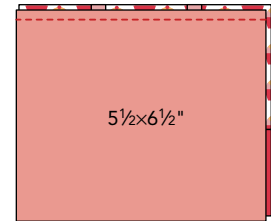


DIAGRAM 3

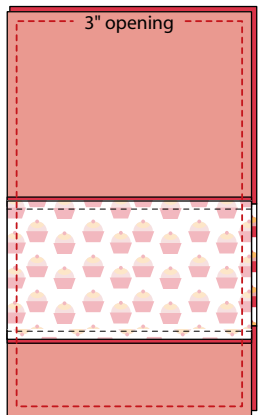


DIAGRAM 4

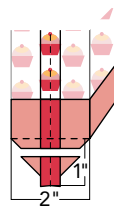
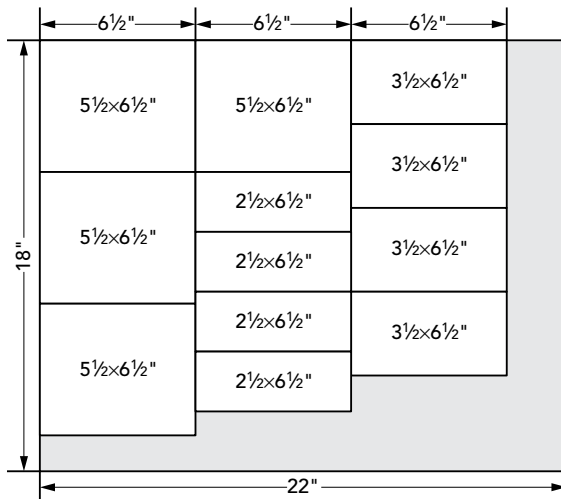


DIAGRAM 5



Small Treat Totes
Cutting Diagram